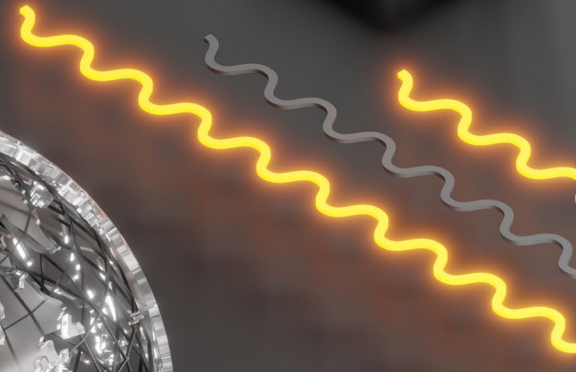
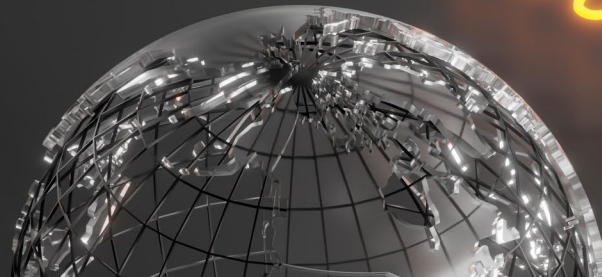




peplink



Peplink's Software Makes It Always Work



About Peplink



Cutting-Edge Provider of Wired and Wireless Connectivity

Peplink makes connectivity reliable. Peplink's ecosystem, SpeedFusion technology and routers have been deployed around the world, helping thousands of customers from many industries increase bandwidth, enhance internet reliability, reduce connectivity cost, or enable new deployment possibilities.

Peplink Software Ecosystem

Management



Technologies



Software License

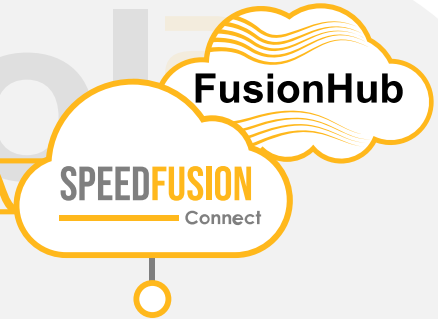


Care Plans

Virtual Endpoints



SpeedFusion



SFC Protect

VIEW



Access to SpeedFusion technologies without additional hardware.



What is SFC Protect?

SFC Protect (SpeedFusion Connect Protect) is Peplink's global network of SpeedFusion endpoints. With an active CarePlan or SFC Protect data plan, you can utilize SpeedFusion wherever you are, without the need for any additional hardware.

Virtual Endpoints



Global Coverage

Access a global network of SpeedFusion endpoints. Build a SpeedFusion tunnel between your device and any of them.



SpeedFusion Technology

Instantly protect your connectivity with SpeedFusion, such as Hot Failover, WAN Smoothing, and Bandwidth Bonding.



Minimal Infrastructure Needed

Works with just a Peplink router, without the need for additional investment in core hardware, configuration, or maintenance.



SFC 5G/LTE

VIEW

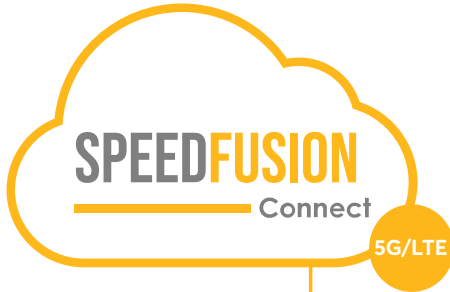


Enjoy on-demand connectivity with SFC 5G/LTE.



What is the difference between SFC Protect and SFC 5G/LTE?

SFC Protect refers to a global network of SpeedFusion endpoints, while SFC 5G/LTE (SpeedFusion Connect 5G/LTE) is Peplink's very own data plan.



Virtual Endpoints



Access to Multiple Carriers

Access multiple carriers with just one plan. Stay connected without worrying which carrier to pick.



Simple and Convenient

Leverage both mobile data and SFC Protect with one subscription.



On-Demand Data

SFC 5G/LTE has no monthly subscriptions. Purchase a data block that is only deducted upon usage, making this an ideal choice for failover connectivity.





Case Study

Subaru Motorsports USA

In addition to various Peplink devices, the racing arm of Subaru also used SFC 5G/LTE to build SpeedFusion tunnels with endpoints from around the world. No matter where they were, they would always find a nearby endpoint to connect to with minimal latency.

[VIEW](#)





Case Study

Cross-Continent Research

An academic researcher moving between the US and Europe used a Peplink router and **SFC Protect** for remote learning and research with IoT systems. Thanks to SFC Protect, the researcher was able to utilize SpeedFusion for uninterrupted academic activities without buying additional hardware.

[VIEW](#)



FusionHub

VIEW



Integrate SpeedFusion into your infrastructure.



What is the difference between FusionHub and SFC Protect?

FusionHub virtual appliance allows you to establish SpeedFusion connections between your cloud or server infrastructure and your Peplink devices. Though it also works as a SpeedFusion endpoint, it requires self-hosting.

Virtual Endpoints



Cloud Server
Agnostic

Use FusionHub in private, public, and hybrid clouds. Establish as many FusionHubs as you need to support your customers.



Bandwidth
Bonding

Connect to your cloud server with the combined speed of all your WAN links. Enjoy faster Internet access by using your server's high-throughput connection.



Scalable
Pricing Structure

Save on initial capital expenditures.
Grow your network affordably.



FusionHub on AWS

VIEW



What is the difference between deploying FusionHub on AWS and other cloud infrastructures?

Peplink has partnered with AWS to take your enterprise connectivity to the next level. Deploying FusionHub on your existing AWS cloud infrastructure is as easy as a few clicks to activate a function.



Enhanced Reliability

Deploy FusionHub on AWS to enjoy SpeedFusion, which combines any type of connection from any ISP to create a highly available and reliable connection for your Peplink devices.



Faster Applications

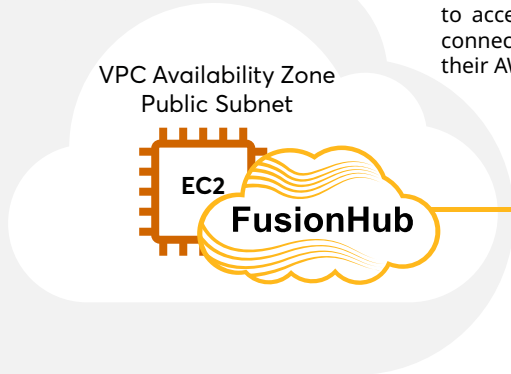
Access applications with combined bandwidth, safeguarding your business agility.



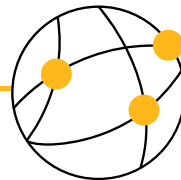
Bridge Between Your Devices and AWS

FusionHub also supports AWS Transit Gateway, which enables customers to access all their VPCs with one VPN connection only, further centralizing their AWS networks.

Virtual Endpoints



AWS Region



Internet Gateway



Peplink Router



Traditional Server



Customer

Branch Site



Case Study

Country Builders Bank

A national bank with 33 branches in the Philippines hosted **FusionHub on AWS** to establish SpeedFusion connections between their cloud server and each Peplink router installed at their branches and headquarters. The deployment gave them bonded bandwidth, redundancy and enhanced security.

[VIEW](#)





Case Study

Alltech Solutions, California

The full-service IT solution provider deployed FusionHub on AWS and connected it with a total of 68 routers among 3 public charter school organizations in different locations. The combined bandwidth of the setup enabled Alltech to manage 16TB of monthly data migration with ease.

[VIEW](#)



SpeedFusion

VIEW



Technologies that make possible fast and reliable connectivity anytime, anywhere.



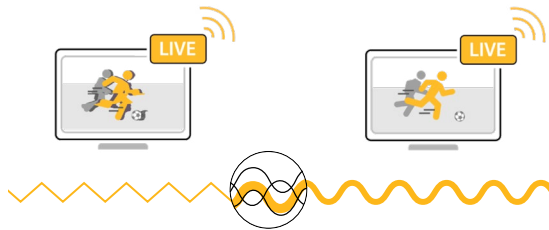
Hot Failover

In the event of a WAN disconnection, Hot Failover will transfer your traffic to another connection while maintaining session persistence. This means ongoing sessions, such as POS transactions and video calls, will not experience interruptions.



Dynamic Weighted Bonding

Dynamic Weighted Bonding improves bandwidth bonding performance by matching connections with similar latencies together, so that a connection with high latency will not drag down overall performance.



WAN Smoothing

WAN Smoothing utilizes intelligent algorithms to fill in connectivity gaps, trading bandwidth for greater connection resiliency. WAN Smoothing minimizes latency and reduces the impact of packet loss.

SpeedFusion

VIEW



Enjoy the power of SpeedFusion by subscribing to care plans or buying software licenses.



What is the difference between Care Plans and software licenses?

Care Plan subscription bundles key tools needed to monitor, provision, and support your Peplink network. Software license adds optional features to your device permanently.

Technologies

	Care Plan	Software License
Payment Method	Annual subscription basis	One-off basis
Features Included	Key tools to effectively manage and maintain InControl, Firmware Upgrades, SpeedFusion Connect, Hardware Warranty...	Adds optional functions to your Peplink devices SpeedFusion technologies, GPIO Ignition Sensing, Wi-Fi WAN, WAN Activation...
Options	PrimeCare, SmartCare, EssentialCare	Feature Pack, FusionHub Peer Limits, OpenVPN WAN

** Details vary for models. Please check the datasheet of your device for your care plan and license options.*

InControl

VIEW



Provision, monitor, manage.
All from a single screen.



What is InControl?

InControl is Peplink's cloud-based network management system, which enables zero touch configuration, provisioning, GPS fleet management, and troubleshooting from a single screen.

Key Features

Management

Device Management

- IP Settings
- System Management

Reports

- Device Reports
- Wi-Fi Reports
- Usage Reports
- SIM Card Reports
- Event Logs
- Tags

Captive Portal

- Captive Portal Reports

Centralized Bulk Configuration

SpeedFusion VPN/ SpeedFusion

- Live Monitoring
- Configuration

Wi-Fi AP

- Group-Wide SSID Settings
- Group-Wide Remote Settings

Network Settings

- Outbound Policy
- Firewall Rules
- Grouped Networks
- Access Control List
- VLAN Networks
- LAN Networks
- Route Advertisement

Device Schedule Management

API Integration

Geo-Fencing

InControl²

InControl

VIEW



Flexibility for all levels of users.

Management



InControl²



MSP-Friendly
Central Management

Customize and rebrand the dashboard to boost your service. Access the devices even after subscription expiration.



InControl
API

Integrate InControl into your own platform. Fold InControl functionality and feed data directly into your own system, web-based platform, or app.



On-Premise
Control

Maximize security on-premise with InControl Virtual Appliance (ICVA). Take full ownership over sensitive data to minimize any chance of attack by hosting InControl on any private network.



InTouch Remote
Device Management

Access all remote devices behind a Peplink router with just one login. Integrate each remote device's platform with InControl for seamless connectivity and simpler management.

FusionSIM

Provision, deploy and manage your SIM cards at mass scale.



What is FusionSIM?

FusionSIM is the technology that enables the router to access SIM cards outside of its integrated SIM slots.



SIM Management at Mass Scale

Establish a FusionSIM infrastructure to enable remote SIM allocation and management.



Reduce Connectivity Cost

Maximize SIM utilization, reduce SIM idle times and minimize connectivity cost.

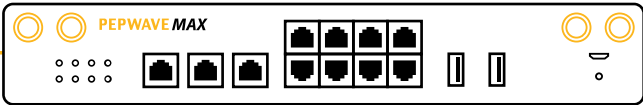


Management



MSP-Friendly Bundled Services

Optimize data plan allocation across devices. Create bundled plans of router and connectivity.



MSP Solution

VIEW



End-to-end connectivity solution designed for MSP.

- 1 Host FusionHub at your cloud servers to set up multiple connections simultaneously.

FusionHub



InControl²

- 2 Make InControl your branded cloud management platform. Have full control and supervision over your network and devices with it.

- 3 Mix and match SIM resources.

FUSIONSIM

- 6 Safeguard SaaS applications and VPN sessions.

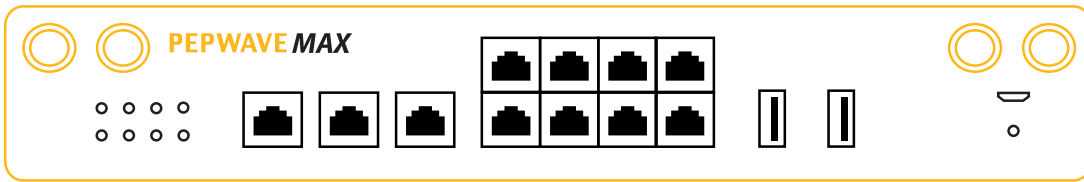


- 4 Use SpeedFusion to improve the SLA of cellular WAN.



- 5 Protect applications like VoIP and video calls.





Follow us on



peplink



@peplink



PeplinkChannel



peplink



company/peplink

